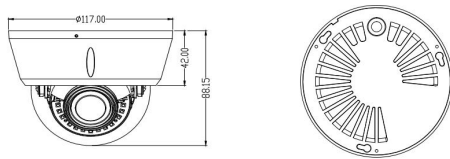


**FEATURES :**

- Max. resolution 2MP(1920×1080 @ 30fps)
- Support low bit rate, low delay and ROI enhance encoding
- Support multi-line OSD, OSD color can be adjusted
- High effective IR leds, long service life, IR distance can reach 20-30m
- Support smart IR, Prevent IR overexposure at night
- ICR infrared filter plate automatic switch, achieve real D/N monitoring
- Support corridor mode, increase the monitoring area in longitudinal strip environment
- Support PoE (optional)
- Support Micro SD card (128G) local-storage
- Support 3D digital N/R, WDR
- Support auto electronic shutter function, adapt different monitoring environment
- Support various intelligent alarm
- Support bidirectional talk
- Support 2CH alarm input / 1CH alarm output
- Support GB28181, Onvif access
- Support Email, FTP, NTP
- Support HTTPS encryption transmission
- Original equipment boot to modify password, ensure password security

Application scene:

Applicable to buildings, supermarkets, hotels, banks, road, warehouse, underground parking lot, bar, pipeline, garden and other dark or lightless environment, which require HD image place, suitable for backlighting environment.

DIMENSION:**WIRE INTERFACE:**

1. Audio input
2. Power supply input
3. Network interface
4. RS485/Alarm output
5. Analog video output
6. Alarm input
7. Audio output

SPECIFICATION :

Param	Model	FS-W6136IHBB55A
CAMERA		
Image sensor		1/2.8"SONY 2.07MP progressive scan Exmor CMOS
Min.illumination		0Lux/F1.4 (IR on) color: 0.02Lux/F1.4, B/W:0.002Lux/F1.4
IR distance		20-30M(12*IR leds)
Electronic shutter		Auto/ Manual(1/25~1/10000), FLK
Day/ Night		ICR switch, auto, color, B/W, ext
Lens		2.8-12mm motorized lens(2.8-12mm DC ICR lens/2.8-12mm ICR lens optional)
Lens interface		Φ14
Auto IRIS		DC driver
S/N ratio		≥50db (AGC OFF)
Output		PAL/NTSC adjustable
WDR		WDR(Off/Low/Middle/High)
Light board control		Auto/ Manual/Off
3D N/R		Off/ Low/ Middle/ High/ Higher
Defog		Off/ Low/ Middle/ High
Mirror		Off/ Horizontal/ Vertical/ 180° rotation/ Corridor mode(90° rotation, 270° rotation)
Slow Shutter		/
Exposure control		Auto/ Manual
Image setting		Brightness, Contrast, Saturation, Sharpness, Hue
AUDIO/VIDEO ENCODING		
Video compression		H.264/
Encoding		Main Profile
H.264 Encoding		BaseLine / Main Profile / High Profile
Encoding features		NTSC: main stream: 1920×1080@30fps, sub-stream: D1@30fps PAL: main stream: 1920×1080@25fps, sub-stream: D1@25fps
Max. Resolution		1920X1080
Video bit rate		Constant bit rate, variable bit rate (16kbps-8000kbps)
Video type		Complex stream/ Video stream
Audio compression		G.711u
Audio bit rate		64Kbps
Audio control		Support input/ output volume gain control
ROI		Support 4 zones, multi-stage level
Watermark function		/
NETWORK		
Network protocol		TCP/IP, UDP, HTTP, DHCP, RTSP, DDNS, NTP, PPPoE, UPnP, SMTP, FTP
Access protocol		ONVIF, GB28181 (optional)
Browser		Support IE, Chrome, Firefox, Safari
Video preview meanwhile		8
User permission		User add/ modify/ delete, permission management
Safe mode		Authorized user name and password, HTTPS encryption and AES link encryption, RTSP
Motion detection		Set detection zone, Multi-level sensitivity can be set
Tampering alarm		1 zone
Privacy Mask		4 zones
Intelligent analysis		Target Counting, Left/Loss, Area Detection, Line Crossing
Event linkage		Snapshot, TF card video, FTP upload or Email sending, alarm output linkage, preset linkage
Multicast function		Support
ANR		Support, match with NVR
Mobile surveillance		Support Apple, Android
Device exception detection		Support network disconnected, IP conflict, illegal access alarm
OSD		Title, time and date overlay, multi-line OSD, OSD color optional
DST		Support
Snapshot		Support snapshot, snapshot resolution is encoding resolution
System update		Support remote update
Other		/
INTERFACE		
Network Interface		RJ45 10M/100M network adaptive
Analog video output		1CH 1.0Vp-p Composite video output
Audio		Line input/ output
Alarm input		2CH input
Alarm output		1CH output
Reset		Support
RS485		Support
TF card		Support Max 128G, Micro SD(SDHC /SDXC) card local-storage
Other		/
GENERAL		
Operating temperature		-20°C ~ 55°C
Operating humidity		0% -90%
Protection grade		IP66/ IK10
Power supply		DC12V /PoE optional
PoE		Optional
Power consumption (max)		<8W
Dimensions(mm)		88.15(H)*Φ117(L)mm
Weight/PCS(g)		

All Info. only for reference, please see the subject produce. Any change will not be notified.